

# Student Logistics (Know Before You Go!)

## Wilderness First Aid (WFA)



*Sponsored by the Adventures Program of UC Berkeley Recreation and Wellness, & NOLS Wilderness Medicine*

**Dates:** March 14 - 15, 2026

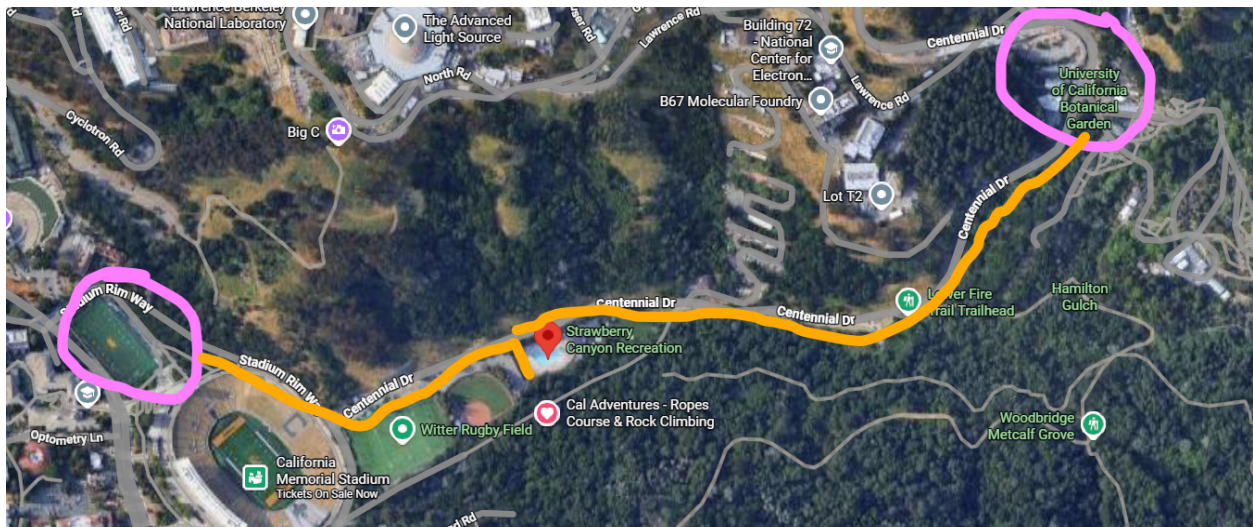
**Cost:** \$ 380 Tuition Only

**Location:** Haas Clubhouse in the Strawberry Canyon Recreation Area (SCRA) on the campus of UC Berkeley

### Travel

The course will take place at the Haas Clubhouse in the Strawberry Canyon Recreation Area (SCRA) on the campus of UC Berkeley. Strawberry Canyon Recreation Area is located on Centennial Drive, 0.2 miles up the hill from the intersection of Centennial and Stadium Rim Way. The facility is on the right as you head up the hill and contains a pool (Strawberry Canyon Pool) which can be spotted from the road.

A map can be found here: <http://tinyurl.com/SCRAMap>



Construction has recently begun at the softball field next to our venue. In the image above:

- The orange lines are walk/pathways to the facility
- There is parking at the [Botanical Garden Parking Lot](#) and the [Football Stadium Parking Garage](#) which are an approximate 10-15 minute walk away from the course.
- Payment for parking is possible at the on site machine, however you may find it easier to use the [PayByPhone app](#)
- Bicycles may be brought inside the facility gate, but must remain outside the buildings and clear of egress routes.
- There are two handicap spaces directly outside of our front gate (between the pool and the construction)
- The [Strawberry Canyon Bus Stops](#) are a good option for those wishing to take public transit.

**NOLS Wilderness Medicine** – M-F from 8am - 5pm Mountain Time  
(866) 831-9001 – [wilderness\\_medicine@nols.edu](mailto:wilderness_medicine@nols.edu) – [NOLS.edu](http://NOLS.edu)

# Student Logistics (Know Before You Go!)



## Meals and Lodging:

There are no provided meals or lodging options for this course. There are a number of hotels and restaurants within one mile walking distance to the course location, and many options in the greater Berkeley area. Year-round camping is also an option at Anthony Chabot Regional Park, about a 30 minute drive from the course.

A kitchen space to include a refrigerator, microwave, sink & stove top is available for use. Coffee and tea will be available - PLEASE BRING YOUR OWN MUG, EATING UTENSILS, AND ANY COOKWARE YOU MIGHT NEED. PLEASE label & date items in the refrigerator, and be good stewards of the shared space.

## Registration and Refund Policy

Please visit [UC Berkeley Recreation & Wellness](#) to register

*Travel insurance is recommended; NOLS's preferred provider is [MDM](#).*

Please note: Wilderness First Responder (WFR) and Wilderness First Responder Recertification courses are offered in partnership with NOLS and are subject to the [NOLS Cancellation, Payment, & Attendance Policies](#). Please [contact NOLS](#) for more information.

The Wilderness First Aid (WFA) course is not eligible for RecWell's standard refund or transfer policies, and it requires at least 15 days' notice for requests due to administrative processes with our external partner.

15 days or greater prior to the start of the WFA course, you may email us at [RecWell@berkeley.edu](mailto:RecWell@berkeley.edu) or submit an [Action Request Form](#) to cancel the course. A refund less a \$50 processing fee will be issued. The WFA course is non-refundable and non-transferrable less than 15 days prior to the course start date.

## For Questions about location, logistics, and registration please contact:

### UC Berkeley Recreation & Wellness:

Office Hours: Monday to Friday, 9:00am to 7:00pm Pacific Time:

Phone: 510-642-7796

Email: [recwell@berkeley.edu](mailto:recwell@berkeley.edu)

Website: <https://recwell.berkeley.edu/wellness-offerings/health-safety/>

### NOLS Wilderness Medicine:

Office Hours: Monday to Friday, 9:00am to 5:00pm Mountain Time.

Phone: (866) 831-9001

Email: [wilderness\\_medicine@nols.edu](mailto:wilderness_medicine@nols.edu)

Fax: (307) 335-2355

Website: <http://www.nols.edu/wilderness-medicine>